

20TC

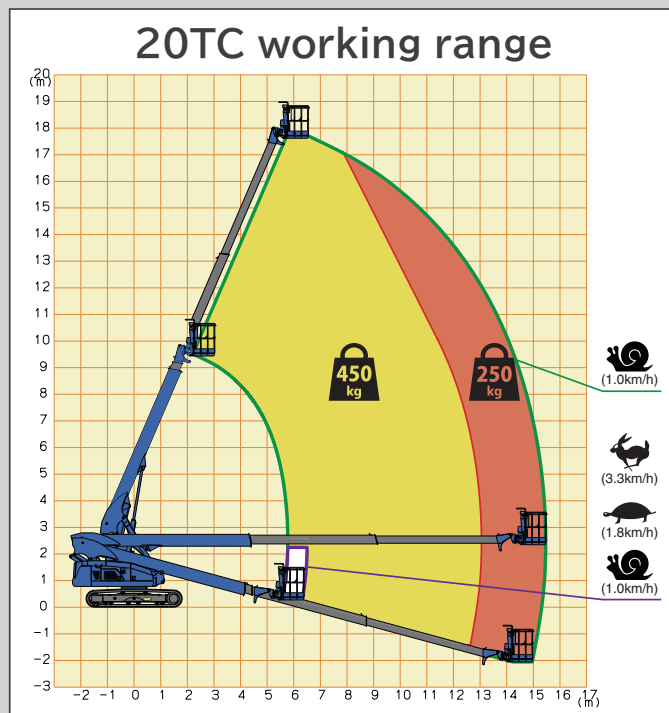
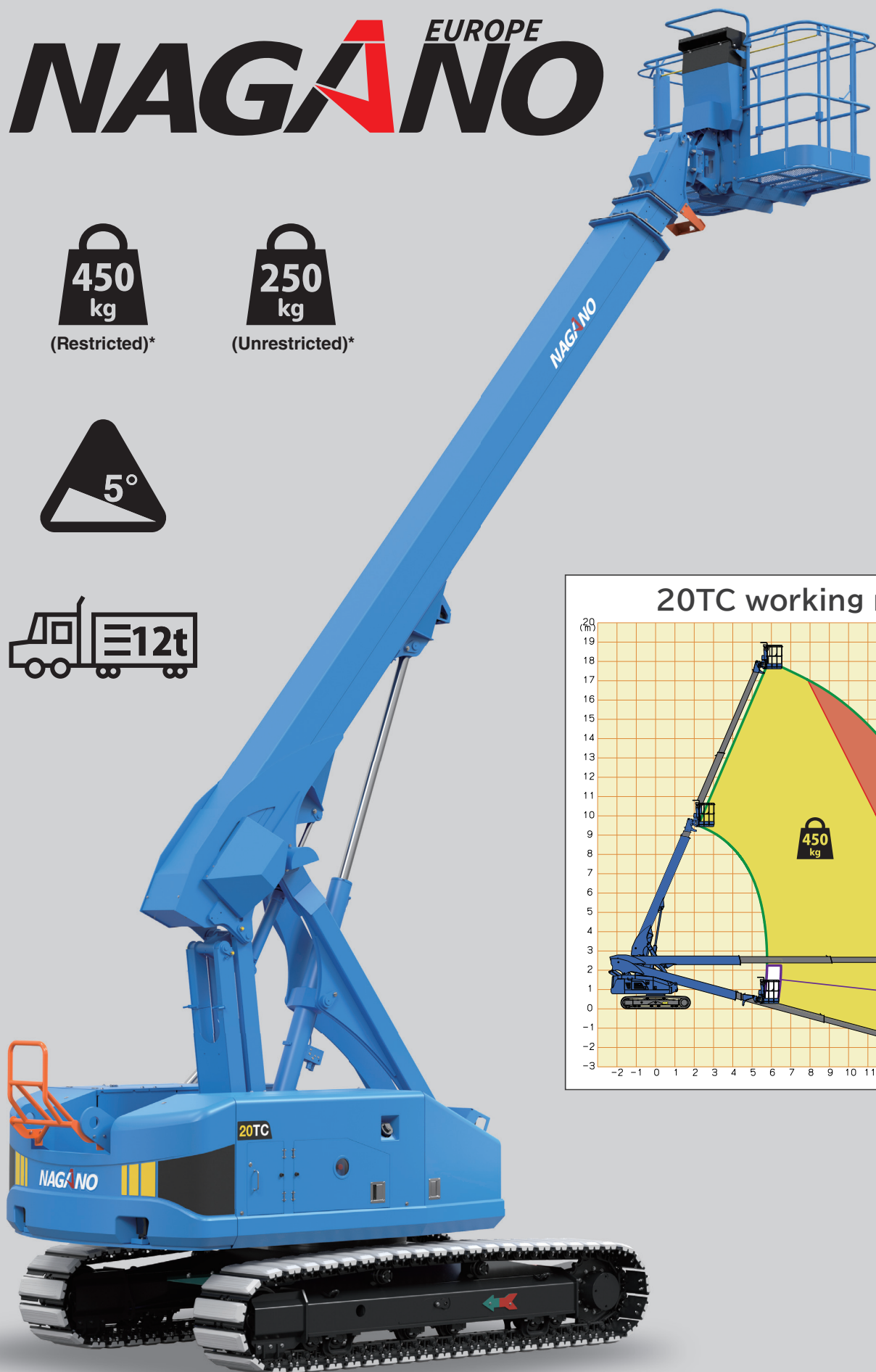
NAGANO ^{EUROPE}

450
kg

(Restricted)*

250
kg

(Unrestricted)*



Specifications



MOBILE ELEVATING WORK PLATFORM (TELESCOPIC BOOM LIFT WITH CRAWLER TRACKS)		
MODEL		20TC
SPECIFICATIONS	Max work floor height	[m] 17.7
	Max outreach	[m] 15.4
	Max load capacity (dual)	[kg] 250 kg (Unrestricted) / 450 kg (Restricted)
	Length x Width x Height (stowed)	[mm] 9,030 x 2,480 x 2,635
	Machine weight *	[kg] 11,570
	Ground pressure Max/Ave	[kPa] 132 / 40
	Allowable tilt	[°] 5
	Slewing angle	[°] 360
	Platform internal size (LxWxH)	[mm] 1,770 x 730 x 1,100
	Platform rotate	[°] L90° ~ R90°
TRAVEL	Travel Speeds	[km/h] 1.0 / 1.8 / 3.3
	Gradeability (stowed)	[% (°)] 36 (20)
POWER SOURCE	Engine	KUBOTA D1803
	Rated power	[kW/min ⁻¹] 23.9 / 2,400
	Max torque / Revolution	[N·m/min ⁻¹] 113.3 / 1,500
	Displacement	[cc] 1,826
	Fuel tank capacity	[ℓ] 130
	Fuel consumption**	[ℓ/h] 7.04
	Voltage	[v] 12
SAFETY DEVICES	Emergency stop	●
	Foot switch / Enable switch	●
	Slew lock pin	●
	Auxiliary lowering control	●
	Traveling restriction (on slope)	●
	Operation restriction (on slope)	●
	Overload sensing system	●
	Battery isolator switch	●

* Machine weight includes specified value of fuel, lubricating oil, hydraulic oil, and coolant.

** Max consumption of rated output per hour.

(Specification are subject to change without prior notice for improvement.)